

Salerno Cruise Destination



Why Calling In Salerno ?

5 Good Things You Need To Know

- It's strategic, Salerno is situated on the South-West Coast of Italy, at the eastern end of the Amalfi Coast and at the southeastern corner of the Sorrento Peninsula.
- Possibility of berthing for any type of cruise ship, including the latest generation. Docks up to 380 meters in length and a minimum depth of 10 meters.
- Numerous excursions and activities for all throughout the year and within easy reach of the ship at the berth.
- Mild weather conditions throughout the year, with average temperatures from October to March ranging from 6.1°C to 22°C and only 76 rainy days per year.
- High potential for pre- and post-cruise packages due to high hotel availability and the port's proximity to the city center and major air, rail and road networks. Naples International Airport 58 km and in 2024 opening of Salerno Airport (Pontecagnano) just 20 minutes from the cruise terminal

Port of Salerno

Technical Features & Facilities

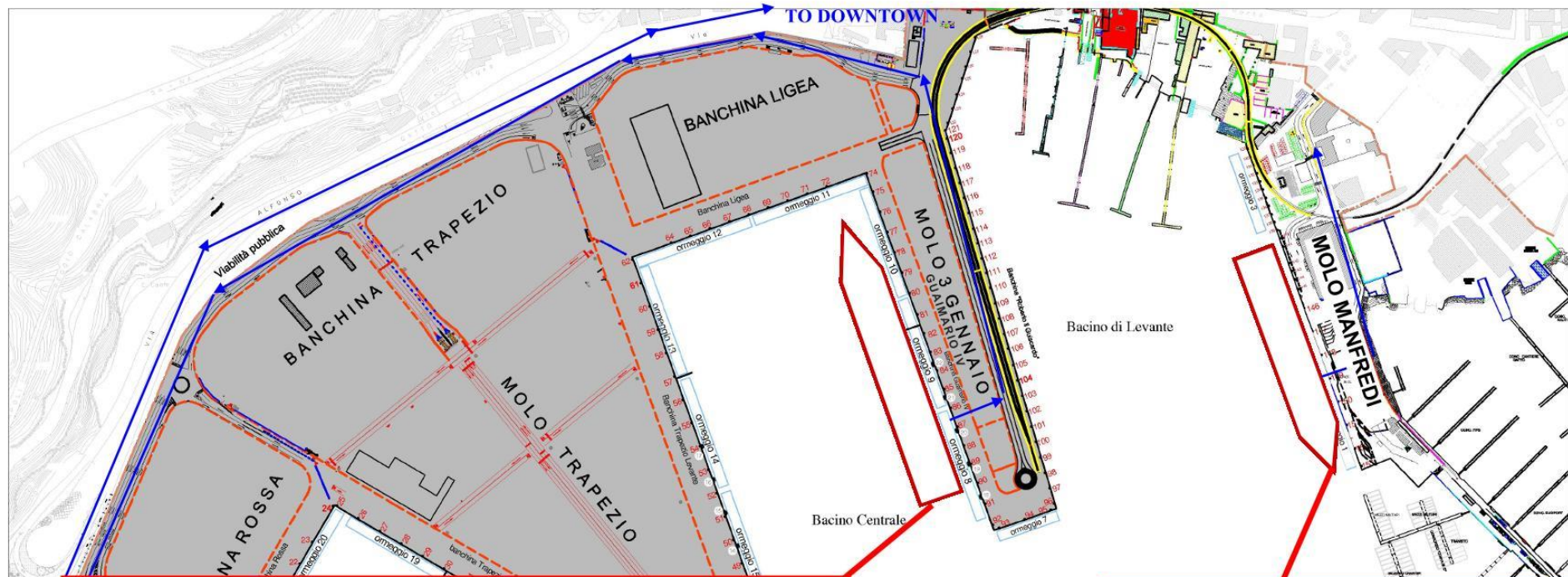
Where We Are

- 0,5 Km From The City Centre
- 0,5 Km From The Railway Station
- Gate From Amalfi Coast

Technical Features

- Berthing capacity: 2 ships
- Cruise docks:
 - Manfredi Pier ; 355 Mt.
 - 3 Gennaio Pier ; 380 Mt.
 - Minimum depth: 10 Mt.
 - Maneuvering dock: 550 Mt.





**MOLO 3 GENNAIO - BERTH 8/9/10 PORT FACILITY ITSAL0001
QUAY SPECIFICATIONS - PORT SERVICES INFORMATIONS**

- Length: 380 metres.
- Draft Allowed: 10,70 metres for 270 metres from the quay head;
9,50 metres for the remaining 110 metres toward the quay corner.
- Bollards every 20 metres - Capacity 80 Tons.
- Fenders: Yokohama Fenders 2,50 diametres + Steel Plate with Rubber Surface.
- Pilots: Available 24/7.
- Mooring Men: Available 24/7.
- Tugs: nr. 2 4.500HP Available 24/7.
Further nr. 1 Tug 4.500 and nr 1 Tug 3.500 HP 24 hrs notice.
- Welcome area in front of ship's gangway; Tourist Infopoint; Taxi Station;
Free WiFi for guests and crew; Toilette.
- Tour Bus area in front of the ship's gangway.

**MOLO MANFREDI CRUISE TERMINAL
PORT FACILITY ITSAL0023
QUAY SPECIFICATIONS
PORT SERVICES INFORMATIONS**

- Length: 355 metres (Max LOA Allowed 320 m.)
- Draft Allowed: According to Coast Guard Ordinance nr. 35 dtd 08/04/2022 is 10,00 m.
- Bollards every 12 metres: Capacity 100 Tons
- Fenders: Steel Plate with Sylicon Surface.
- Pilots: Available 24/7
- Mooring Men: Available 24/7
- Tugs: nr. 1 4.500HP + nr. 1 4.500HP Available 24/7.
Further nr. 1 Tug 4.500HP + nr. 1 Tug 3.500HP 24 hrs notice.
- Distance from downtown 200 m/5 min walk
- Tour Bus area in front of the ship's gangway.

Port of Salerno

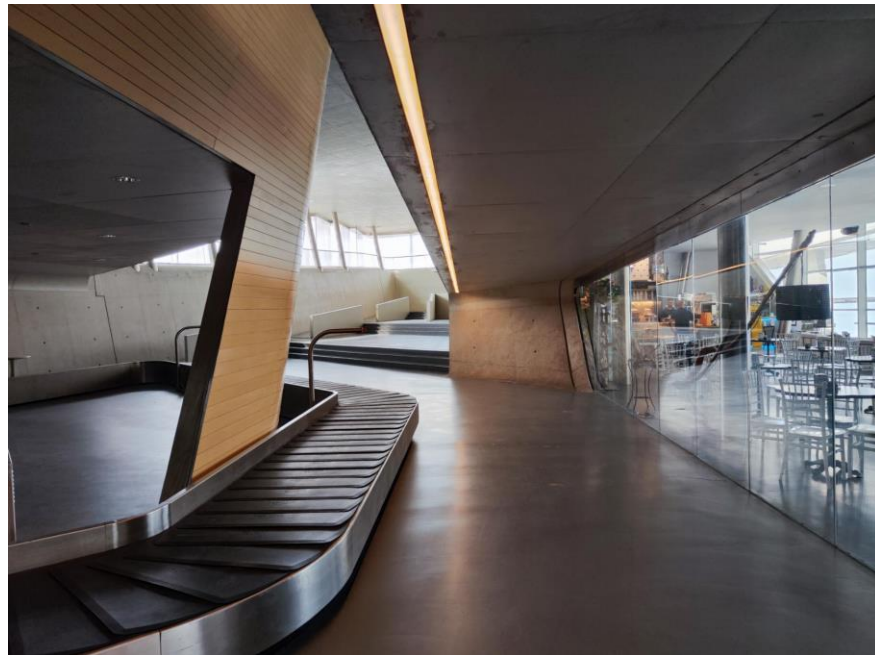
Technical Features & Facilities

Services For Cruise Ships

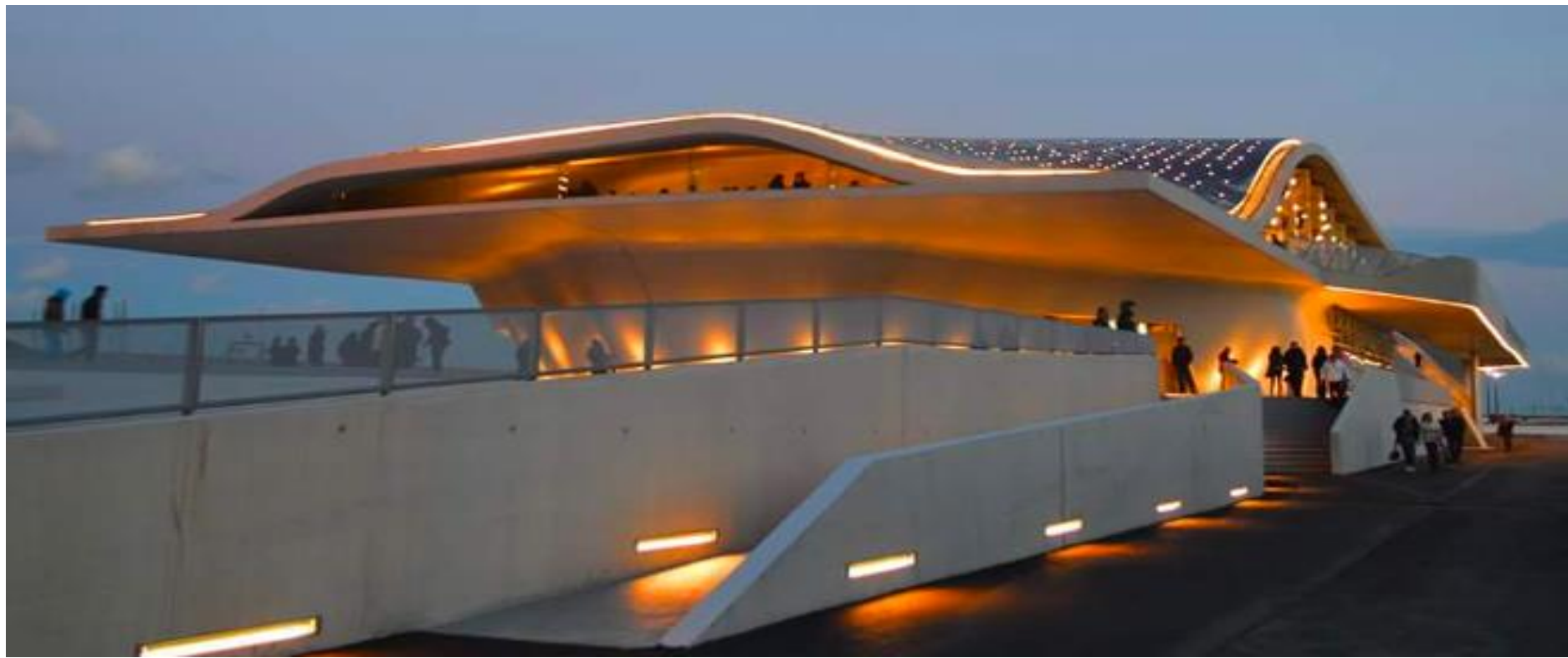
- **Pilotage**
- **Tugs Available**
- **Bunkering**
- **Garbage Disposal**
- **Water**
- **Wide Transportation Area With A Designated Shore Excursion Dispatch Location And Parking For Motor Coaches And Taxis**

Services For Guest

- **Lounge Bar**
- **Tobacco Store**
- **Local Artisan Shops And Boutiques**
- **Restroom**
- **Disabled Toilets And A Wheelchair Are Available**
- **Taxi And Water Taxi Point**
- **Parking Facilities For Cruisers' Cars**
- **Shuttle Bus To The City Center**
- **Passenger Information Desk**
- **Terminal Accessibility And Services For Prm Guests**



Zaha Hadid Cruise Terminal



In 1999 an international call for ideas for the design of the maritime station was launched by the Municipality of Salerno. The competition was won by the Anglo-Iraqi architect Zaha Hadid. The project saw its execution in 2005 and the terminal was then built in the Molo Manfredi area and inaugurated on 25 April 2016. The Hadid firm defined the work as "an oyster with a hard outer shell that contains fluid and soft elements inside, a" hardened "covering that is a protective shield from the intense sun of the Mediterranean". With its sinuous lines, the terminal enshrines the transition from land to sea, from solid to liquid, both aesthetically and functionally, reinforcing the intimate relationship between the city and the waterfront through an innovative design.

Salerno Cruise Destination

One Destination, Thousand Faces



Amalfi Coast UNESCO World Heritage



The Amalfi Coast lays along the Tyrrhenian coast, South-West of Salerno. It is an area of incredible natural beauty, characterized by terraces for the cultivation of vineyards and orchards and towns of great architectural and artistic value, including Amalfi and Ravello.

The area of the Unesco site includes twelve municipalities and multiple historical-artistic evidences that represent the identity of the origins: from the Roman villas of Minori and Positano of the first century AD to medieval public and private architecture, precious jewelry and handicrafts housed in churches and museums, the natural wonders of the Valle dei Mulini and the majolica domes of Vietri, a sign of a world-famous ceramic handicraft.

Salerno Cruises Destination

One Destination, Thousand Faces

Archeological Park Of Paestum Unesco World Heritage



Paestum is an ancient city of Magna Graecia that the founders called Poseidonia in honor of Poseidon, but very devoted to Athena and Hera. The name of Paestum was attributed to the city by the Romans. The three Greek temples of Paestum, built between the sixth and fifth centuries a.C., together with those of Athens and Agrigento, are the Templar buildings best preserved from the classical age.

Salerno Cruise Destination

Beyond Your Imagination



Capri, Amalfi Coast, Positano

Ravello, Pompei, Salerno Medioeval City, Cilento National Park, Naples, Vesuvio

And For Active Lifestyle: Trekking, Kayaking, Rafting

In One Of The Most Amazing Natural Landscape Of The World

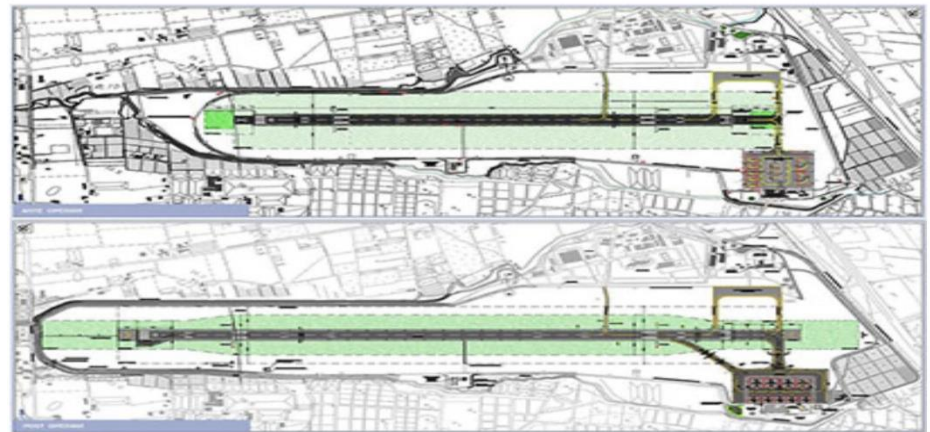
The mozzarella di bufala is one of the best-known cheeses in the world, it is one of the first dairy products in Italy which are being exported abroad and has an ancient history that dates back to the Middle Ages. The uniqueness of buffalo mozzarella is given by essential characteristics of milk origin and processing of mozzarella. The breeding of buffaloes of the Italian Mediterranean breed and the production of Campania buffalo mozzarella D.O.P. find their favourite place of choice in the province of Salerno.



By 2024 it opens



In 2024 will be the reopening of Salerno airport with completely new infrastructure thanks to investments of € 150 million for Gesac. Others will come from other subjects. Salerno is managed by the same company that operates as a manager in Naples Capodichino will thus expand the horizons. Besides the new terminal that will be able to manage until some million of passengers there will be the lengthened runway, the intense activities are in course, until the length of 2000 meters. In the future up to 2200 meters. The ability to manage traffic business aviation, scheduled and charter to more distant distances will allow new territories that are part of the catchment area of this airport to allow a faster influx of tourists in particular to the Cilento, the Tyrrhenian coast of Basilicata, and the Amalfi Coast.



Arrivederci a Salerno

